

/01 Indicators Overview

Learn from international



SSI ESG RATING



Focus on local

3 pillars	14 themes	26 key indicators	underlying indicators
Environment (E)	management system	management system	100+
	green operation goal	low carbon plan/goal green purchase plan	
	eco product	carbon footprint economic product and service	
	external identification	external identification	
	illegal event	illegal event*	
Social (S)	institution system	CSR quality	
	health and safety	accident reduction plan accidents accidents tendency	
	social contribution	donations employee growth rate poverty alleviation*	
	external identification	external identification	
	institution system	ESG self-supervision	
Governance (G)	governance structure	related transaction* board independence	
	operation activity	tax transparency	
	operation risk	asset quality* financials credibility short debt risk* stake pledge risk* information disclosure quality	
	punishment	Company and its subsidiary punishment* executives illegal events*	

/02 Characteristics

More localized

Localization of ESG rating, covering poverty alleviation, related transactions and other China-based indicators

01

02

Higher frequency

Quarterly ESG assessment, temporary adjustment of major events

Significant return

Combine ESG with smart beta, to achieve a higher return

03

04

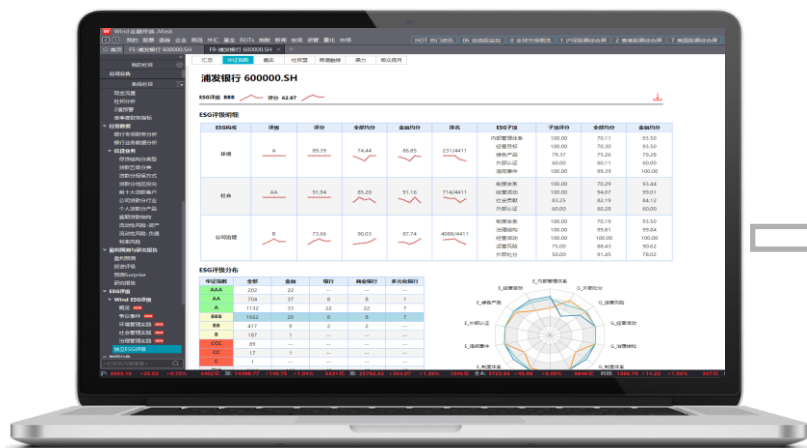
Full coverage

Fully covers A-shares and most bond issuers

The first ESG ratings specifically designed for asset managers in China capital market

/03 Availability

Officially launched on Wind on April 28, 2020



浦发银行 600000.SH

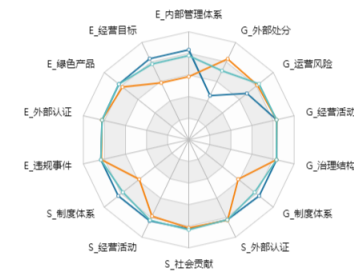
ESG评级 BBB 评分 82.97

ESG评级明细

ESG构成	评级	评分	全部均分	金融均分	排名	ESG子项	子项评分	全部均分	金融均分
环境	A	89.39	74.44	86.85	231/4411	内部管理体系	100.00	70.11	93.50
						经营目标	100.00	70.30	93.50
						绿色产品	79.37	75.26	79.28
						外部认证	60.00	60.11	60.00
						违规事件	100.00	99.39	100.00
社会	AA	91.94	85.20	91.16	714/4411	制度体系	100.00	70.29	93.44
						经营活动	100.00	94.07	99.01
						社会贡献	83.25	82.19	84.12
						外部认证	60.00	60.28	60.00
公司治理	B	73.66	90.03	87.74	4068/4411	制度体系	100.00	70.19	93.50
						治理结构	100.00	99.81	99.84
						经营活动	100.00	100.00	100.00
						运营风险	75.00	88.43	90.62
						外部处分	50.00	91.45	78.02

ESG评级分布

华证指数	全部	金融	银行	商业银行	多元化银行
AAA	202	22	--	--	--
AA	704	37	8	8	1
A	1132	33	22	22	7
BBB	1662	20	8	8	7
BB	417	9	2	2	--
B	187	1	--	--	--
CCC	89	--	--	--	--
CC	17	1	--	--	--
C	1	--	--	--	--
总计	4411	123	40	40	15



ESG分数与排名

	全部	金融	银行	商业银行	多元化银行
最高分	99.64	95.86	94.73	94.73	92.17
最低分	54.37	63.26	77.93	77.93	82.91
平均分	84.9	88.64	86.71	86.71	85.23
本公司排名	3138/4411	105/123	36/40	36/40	13/15

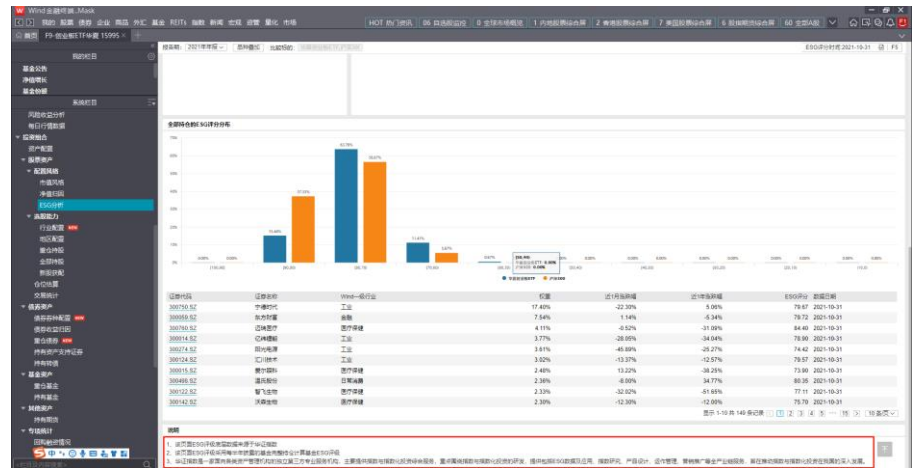
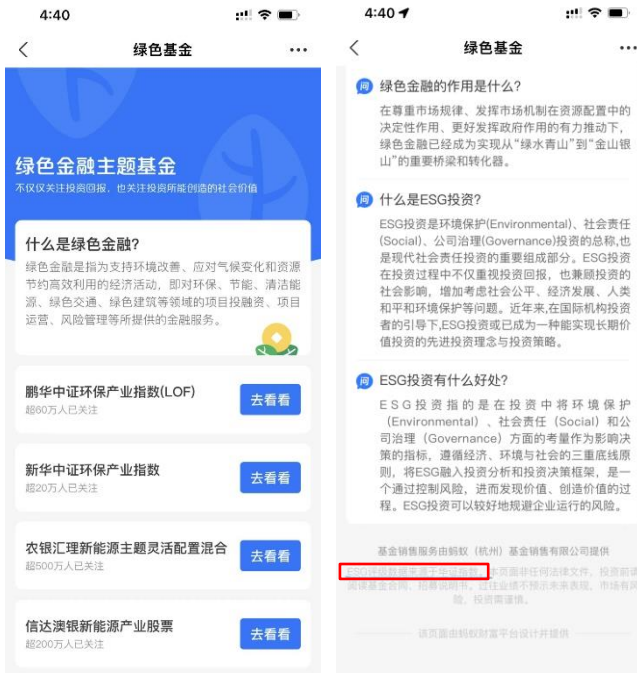
ESG评级说明

注:

- 1 华证ESG评价体系以ESG核心内涵和发展经验为基础,结合国内市场的实际情况,自上而下构建三级指标体系,具体包括一级指标3个、二级指标14个、三级指标26个以及超过130个底层数据指标。
- 2 在ESG评价过程中,集成传统数据与另类数据,打造AI驱动的大数据引擎,通过按季度定期评价与动态跟踪相结合的方式,系统测算过去10年以上全部A股上市公司的ESG得分水平(总分为100分),并相应地给予“AAA-C”的九档评级,拥有超过20,000,000 ESG评价数据。

/04 Fund ESG Ratings

As the exclusive ESG data provider for the 'Green Fund Channel' in Alipay, SSI ESG Ratings is applied for green funds selection, which could guide investors participating in sustainable investment.



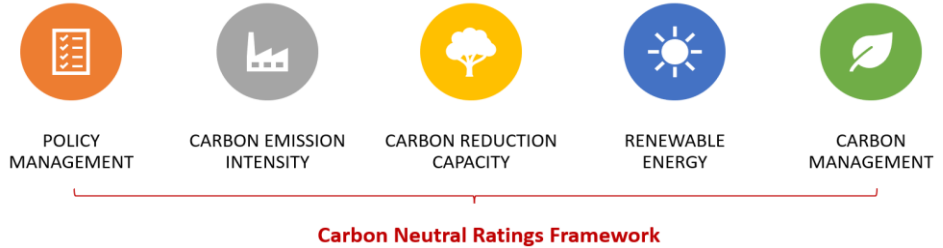
For any fund, press F9 to enter the details page - ESG Analysis

- 说明
1. 该页面ESG评级数据来源于中证指数
 2. 该页面ESG评级采用每半年披露的基金完整持仓计算基金ESG评级



Underlying ESG data is from SNSI

/01 Characteristics

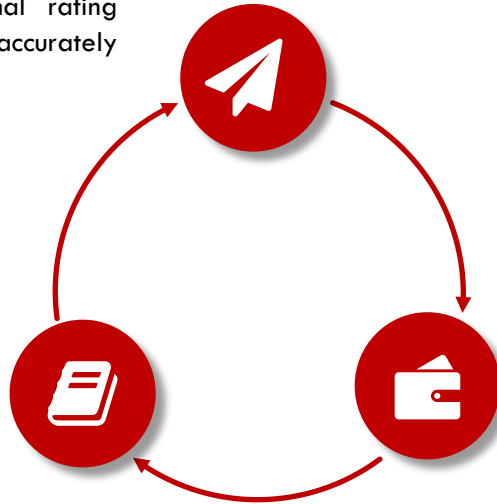


The First In China

SNSI Carbon Neutral Ratings is the first carbon neutralization rating system in China. It combines international rating experience and China's characteristic indicators to accurately locate the core indicators of carbon neutral rating.

Data Source Reliability

Data sources include company announcements, industrial and commercial databases, the Ministry of ecology and environment, industry and information technology, local ecology and environment bureaus, etc. Those data sources provide strong support for SNSI Carbon Neutral Ratings.



Covering all A shares

SNSI Carbon Neutral Ratings cover all A-share listed companies from 2018 to 2022. The ratings provide investors with a comprehensive perspective for analyzing A-share listed companies.

Data

ESG Rating Data

Standard database, with all A-shares, from 2009.

ESG Risk Data

Negative information monitoring, providing a ESG risk investigation, early warning, etc.

Fund ESG Data

A evaluation of fund ESG level based on their holdings.

Carbon Neutral Data

Standard database, with all A-shares, from 2018.

Research and Consultancy

ESG Tracking Report

Updated quarterly, providing the current distribution of ESG rating and warning of significant upgrade or downgrade of ESG rating.

ESG Index

Select sample stocks based on ESG rating to avoid ESG tail risk; Also customize the ESG index.

Customized Service

Assist clients to improve ESG level; Customized analysis report; Customized index; Customized data services, etc.